



# Cytochrome b5 Polyclonal Antibody

<b>Catalog No</b>	YP-Ab-00365
<b>Isotype</b>	IgG
<b>Reactivity</b>	Human;Mouse;Rat
<b>Applications</b>	WB;IHC;IF;ELISA
<b>Gene Name</b>	CYB5A
<b>Protein Name</b>	Cytochrome b5
<b>Immunogen</b>	The antiserum was produced against synthesized peptide derived from human CYB5. AA range:61-110
<b>Specificity</b>	Cytochrome b5 Polyclonal Antibody detects endogenous levels of Cytochrome b5 protein.
<b>Formulation</b>	Liquid in PBS containing 50% glycerol, 0.5% BSA and 0.02% sodium azide.
<b>Source</b>	Polyclonal, Rabbit,IgG
<b>Purification</b>	The antibody was affinity-purified from rabbit antiserum by affinity-chromatography using epitope-specific immunogen.
<b>Dilution</b>	Western Blot: 1/500 - 1/2000. Immunohistochemistry: 1/100 - 1/300. Immunofluorescence: 1/200 - 1/1000. ELISA: 1/5000. Not yet tested in other applications.
<b>Concentration</b>	1 mg/ml
<b>Purity</b>	≥90%
<b>Storage Stability</b>	-20°C/1 year
<b>Synonyms</b>	CYB5A; CYB5; Cytochrome b5; Microsomal cytochrome b5 type A; MCB5
<b>Observed Band</b>	15kD
<b>Cell Pathway</b>	[Isoform 1]: Endoplasmic reticulum membrane; Single-pass membrane protein; Cytoplasmic side. Microsome membrane; Single-pass membrane protein; Cytoplasmic side.; [Isoform 2]: Cytoplasm.
<b>Tissue Specificity</b>	Erythrocyte,Liver,Spleen,Uterus,
<b>Function</b>	disease:Defects in CYB5A are the cause of type IV hereditary methemoglobinemia [MIM:250790].,function:Cytochrome b5 is a membrane bound hemoprotein which function as an electron carrier for several membrane bound oxygenases.,similarity:Belongs to the cytochrome b5 family.,similarity:Contains 1 cytochrome b5 heme-binding domain.,
<b>Background</b>	The protein encoded by this gene is a membrane-bound cytochrome that reduces ferric hemoglobin (methemoglobin) to ferrous hemoglobin, which is required for stearyl-CoA-desaturase activity. Defects in this gene are a cause of type IV hereditary methemoglobinemia. Three transcript variants encoding different isoforms have been found for this gene. [provided by RefSeq, Jun 2010],



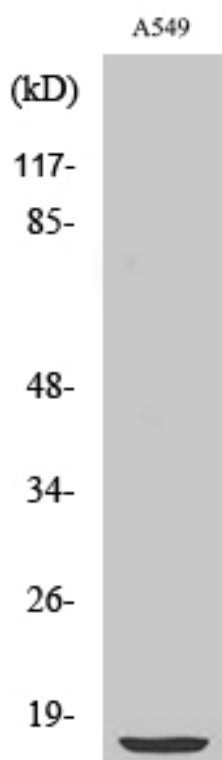
#### matters needing attention

Avoid repeated freezing and thawing!

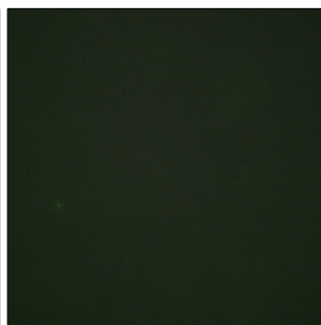
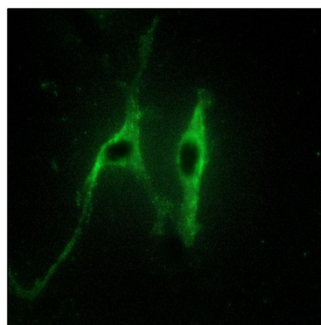
#### Usage suggestions

This product can be used in immunological reaction related experiments. For more information, please consult technical personnel.

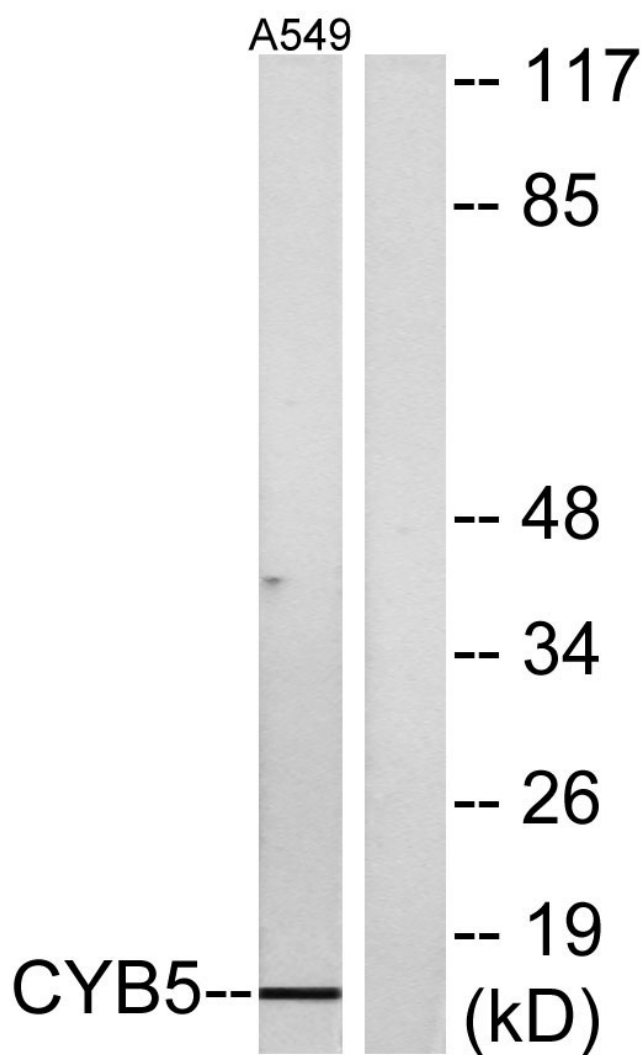
### Products Images



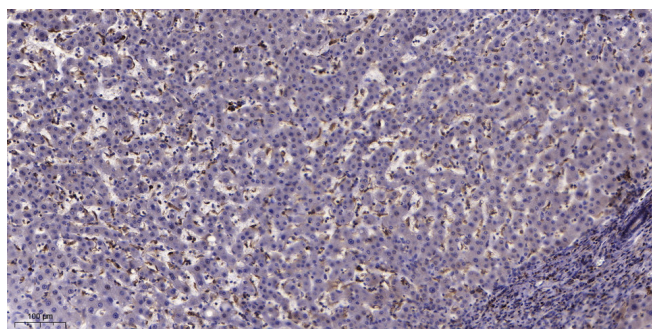
Western Blot analysis of various cells using  
Cytochrome b5 Polyclonal Antibody



Immunofluorescence analysis of NIH/3T3 cells, using  
CYB5 Antibody. The picture on the right is blocked with  
the synthesized peptide.



Western blot analysis of lysates from A549 cells, using CYB5 Antibody. The lane on the right is blocked with the synthesized peptide.



Immunohistochemical analysis of paraffin-embedded human liver cancer. 1, Antibody was diluted at 1:200(4° overnight). 2, Tris-EDTA,pH9.0 was used for antigen retrieval. 3,Secondary antibody was diluted at 1:200(room temperature, 45min).